



Irasburg STP BP24(15)
VT Route 58 Sidewalk Project
Public Informational Meeting



April 8, 2026

Slide 1

DP1 Add Date. It will become part of public record
Daniel Peck, 2025-10-13T19:47:09.361

Project Team

Sidewalk Project

- **Municipal Project Manager: Greenman Pederson, Inc (GPI)**
 - Pat Travers
- **Design Consultants: Vanasse Hangen Brustlin, Inc. (VHB)**
 - Daniel Peck
- **FHWA Oversight: Vermont Agency of Transportation**
 - Daniel Judkins

Project Background

- **Previous Studies**

- Summit Engineering Feasibility Study & Plans (2003)
- DG Addendum (2023)

- **Preferred Alternative**

- Alternative 3 – Sidewalk on North Side of VT 58

- **Grant Award**

- Town Received a 2024 Bike/Ped Grant (\$634,000) to Move the Project Into Final Design
- Town has a 20% Match (\$159,000)
- Grant is Administered through VTrans



Sidewalk Project Area

Irasburg Sidewalk Project (Purpose)

The purpose of this project is to provide a safe pedestrian facility that will connect the Village Common with the Irasburg Village School along VT Route 58 in Irasburg, Vermont....



Slide 5

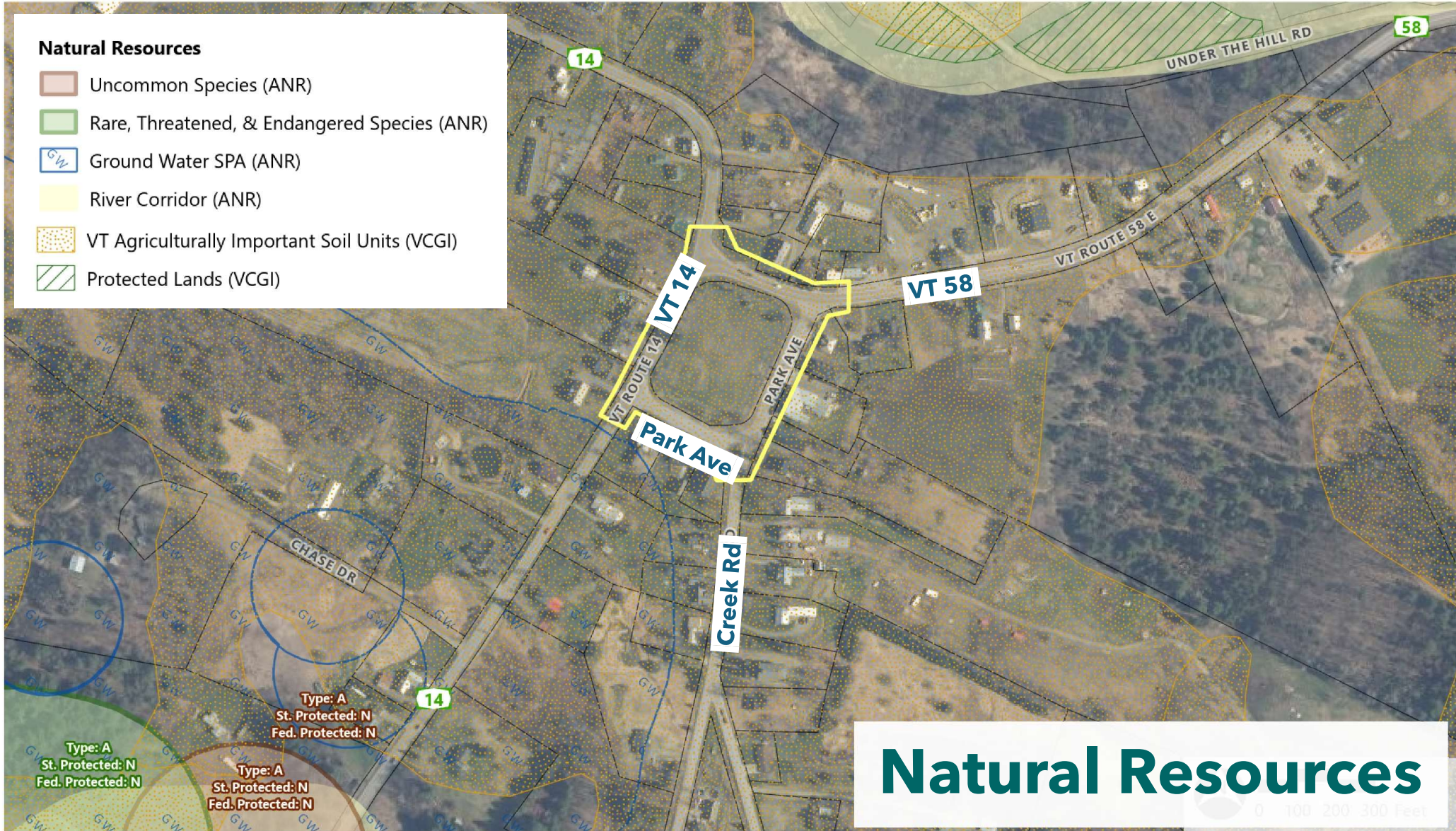
DP1

Projects' Purpose?

Daniel Peck, 2025-10-13T19:46:18.317

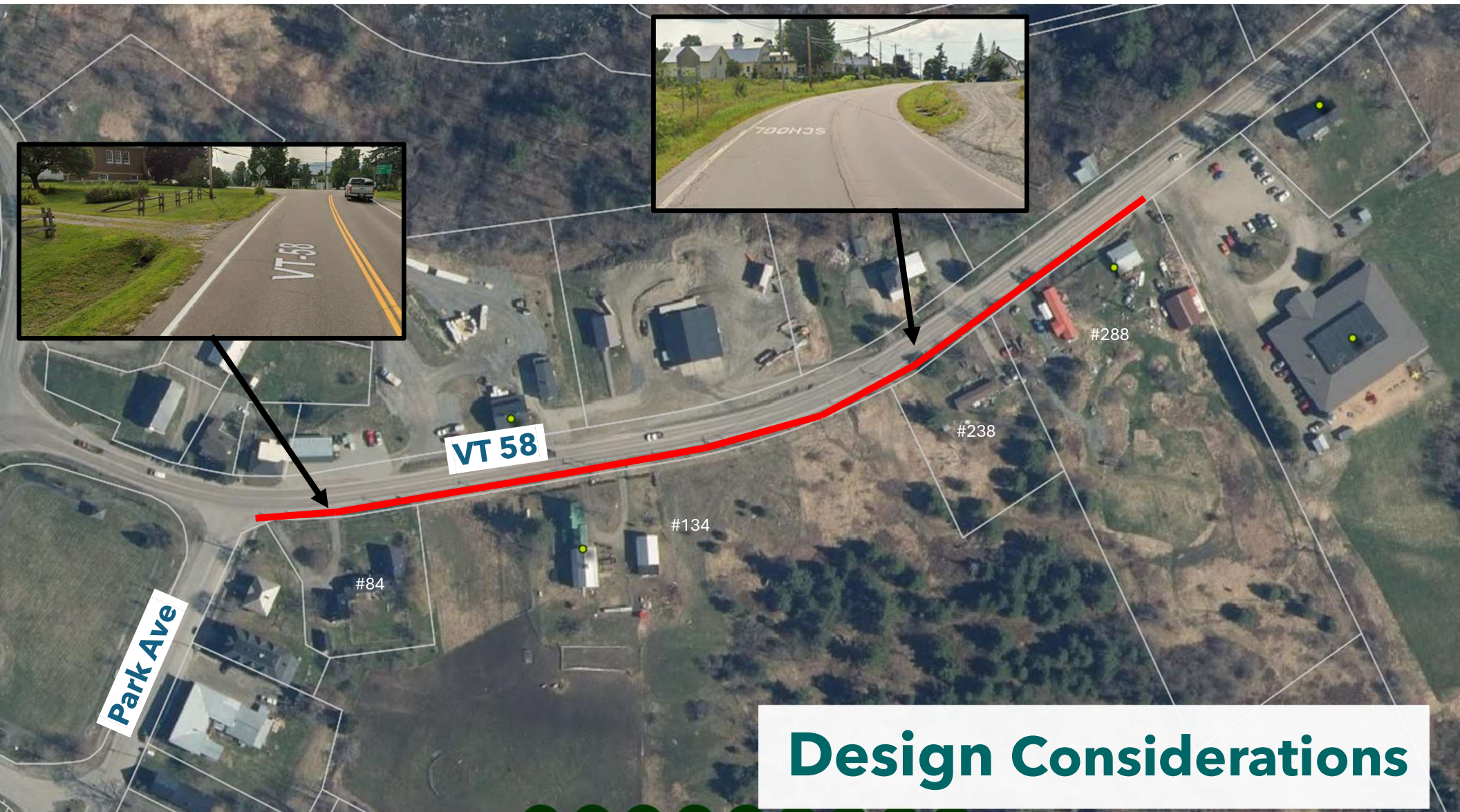
Natural Resources

- Uncommon Species (ANR)
- Rare, Threatened, & Endangered Species (ANR)
- Ground Water SPA (ANR)
- River Corridor (ANR)
- VT Agriculturally Important Soil Units (VCGI)
- Protected Lands (VCGI)



Natural Resources

0 100 200 300 Feet



Design Considerations

What We've Done to Date

- **Local Concerns Meeting** | Completed in October 2025
- **Ground Survey** | November 2025 – Completed
- **Conceptual Plans Submittal** | Completed January 2026
 - Presented Today



What We Heard at the Local Concerns Meeting

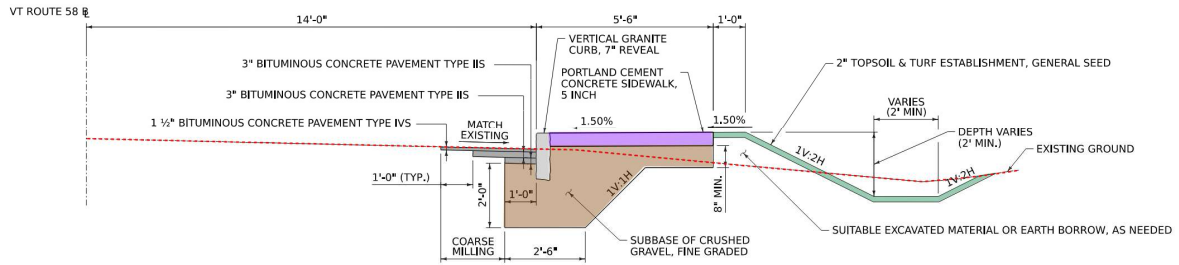
- **Sidewalk is a High Priority Project**
 - No room for children to walk from School to Library and/or Common
 - High speed corridor for heavy loaded trucks
- **Need to Accommodate Snowmobile Crossing**
- **Look at Driveway Culverts**
- **Look for Waterline conflicts**

PORTLAND CEMENT CONCRETE SIDEWALK, 5"
 STA. 172+97 - STA. 173+14 RT
 STA. 173+37 - STA. 173+90 RT
 STA. 174+16 - STA. 175+75 RT

PORTLAND CEMENT CONCRETE SIDEWALK, 8"
 STA. 173+14 - STA. 173+37 RT
 STA. 173+90 - STA. 174+16 RT

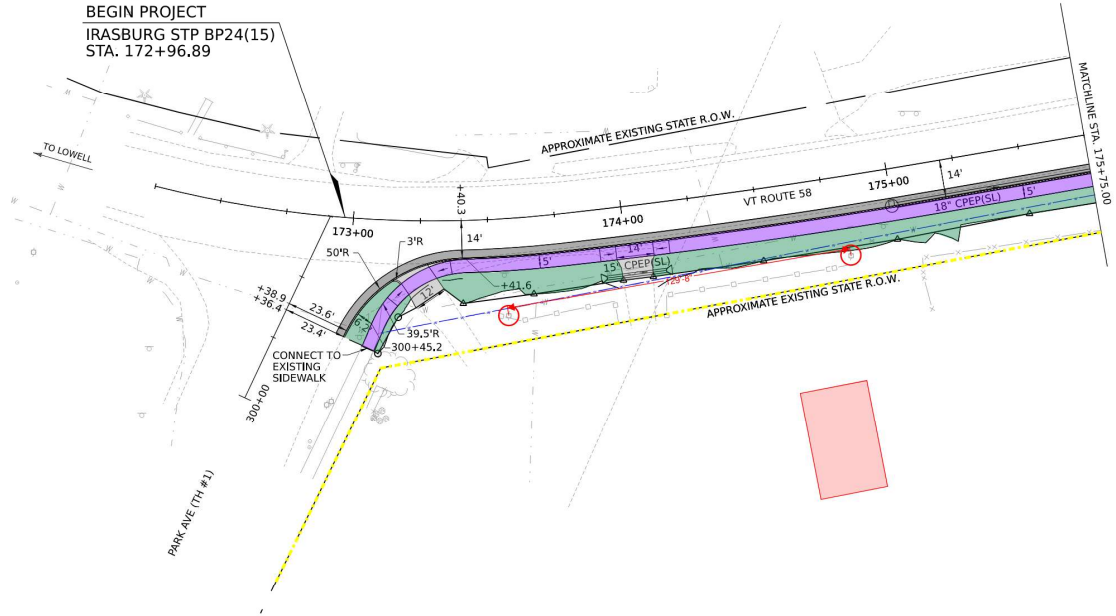
VERTICAL GRANITE CURB
 STA. 172+97 - STA. 175+75 RT

AGGREGATE SURFACE COURSE
 STA. 173+19 - STA. 174+34 RT
 STA. 173+95 - STA. 174+10 RT



VT ROUTE 58 - CURBED SECTION
 NOT TO SCALE

BEGIN PROJECT
 IRASBURG STP BP24(15)
 STA. 172+96.89



PROJECT NAME: IRASBURG
 PROJECT NUMBER: STP BP24(15)

FILE NAME: 175910_bdr_pln.dgn
 PROJECT LEADER: D.M. PECK
 DESIGNED BY: H.P. SCHUKEI
 LAYOUT PLAN SHEETS (1 OF 3)

PLOT DATE: 1/23/2026
 DRAWN BY: H.P. SCHUKEI
 CHECKED BY: D.M. PECK
 SHEET 9 OF 18

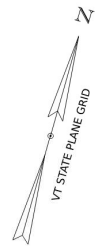
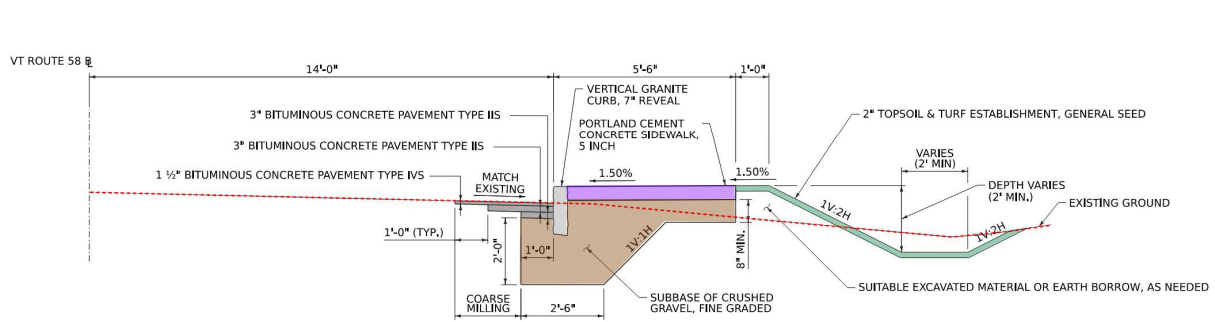
PORTLAND CEMENT CONCRETE SIDEWALK, 5"
 STA. 175+75 - STA. 177+12 RT
 STA. 177+34 - STA. 177+56 RT
 STA. 177+80 - STA. 181+03 RT
 STA. 181+25 - STA. 181+75 RT

PORTLAND CEMENT CONCRETE SIDEWALK, 8"
 STA. 177+12 - STA. 177+34 RT
 STA. 177+56 - STA. 177+80 RT
 STA. 181+03 - STA. 181+25 RT

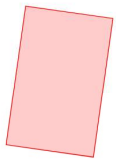
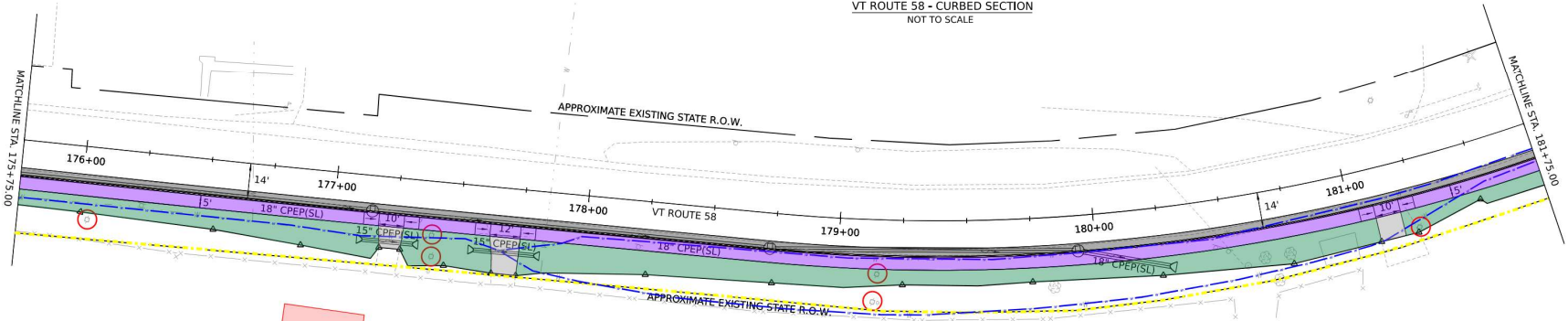
VERTICAL GRANITE CURB
 STA. 175+75 - STA. 181+75 RT

REMOVE AND RESET MAILBOX
 STA. 177+34 RT

AGGREGATE SURFACE COURSE
 STA. 177+18 - STA. 177+28 RT
 STA. 177+74 - STA. 177+62 RT
 STA. 181+09 - STA. 181+19 RT



VT ROUTE 58 - CURBED SECTION
 NOT TO SCALE



PROJECT NAME:	IRASBURG	PLOT DATE:	1/23/2026
PROJECT NUMBER:	STP BP24(15)	DRAWN BY:	H.P. SCHUKEI
FILE NAME:	175910_bdr_mu1.dgn	CHECKED BY:	D.M. PECK
PROJECT LEADER:	D.M. PECK	LAYOUT PLAN SHEETS (2 OF 3)	SHEET 10 OF 18
DESIGNED BY:	H.P. SCHUKEI		

PORTLAND CEMENT CONCRETE SIDEWALK, 5"
 STA. 181+75 - STA. 182+34 RT
 STA. 182+60 - STA. 183+00 RT
 STA. 183+27 - STA. 184+87 RT
 STA. 185+14 - STA. 185+17 RT

PORTLAND CEMENT CONCRETE SIDEWALK, 8"
 STA. 182+34 - STA. 182+60 RT
 STA. 183+00 - STA. 183+27 RT
 STA. 184+87 - STA. 185+14 RT
 STA. 185+17 - STA. 185+26 RT

DETECTABLE WARNING SURFACE
 STA. 185+25 RT

VERTICAL GRANITE CURB
 STA. 181+75 - STA. 185+27 RT

REMOVE AND RESET MAILBOX
 STA. 182+31 RT
 STA. 182+92 RT

AGGREGATE SURFACE COURSE
 STA. 183+06 - STA. 183+21 RT
 STA. 184+92 - STA. 185+07 RT

BITUMINOUS CONCRETE PAVEMENT, TYPE IVS, NON-PAVER PLACED
 STA. 182+40 - STA. 182+54 RT

VT ROUTE 58

14'-0"

5'-6"

1'-0"

3" BITUMINOUS CONCRETE PAVEMENT TYPE IIS

3" BITUMINOUS CONCRETE PAVEMENT TYPE IIS

1 1/2" BITUMINOUS CONCRETE PAVEMENT TYPE IVS

VERTICAL GRANITE CURB, 7" REVEAL

PORTLAND CEMENT CONCRETE SIDEWALK, 5 INCH

2" TOPSOIL & TURF ESTABLISHMENT, GENERAL SEED

VARIES (2' MIN.)

DEPTH VARIES (2' MIN.)

EXISTING GROUND

1'-0" (TYP.)

2'-0"

COARSE MILLING

2'-6"

SUBBASE OF CRUSHED GRAVEL, FINE GRADED

SUITABLE EXCAVATED MATERIAL OR EARTH BORROW, AS NEEDED

END PROJECT
 IRASBURG STP BP24(15)
 STA. 185+28,97

VT ROUTE 58 - CURBED SECTION
 NOT TO SCALE

APPROXIMATE EXISTING STATE R.O.W.

MATCHLINE STA. 181+75.00

182+00

183+00

184+00

185+00

+11.7'

+26.7'

TO ORLEANS

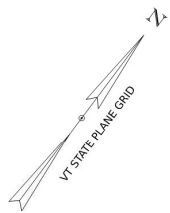
APPROXIMATE EXISTING STATE R.O.W.



PROJECT NAME: IRASBURG
 PROJECT NUMBER: STP BP24(15)

FILE NAME: 175910_bdr_nu1.dgn
 PROJECT LEADER: D.M. PECK
 DESIGNED BY: H.P. SCHUKEI
 LAYOUT PLAN SHEETS (3 OF 3)

PLOT DATE: 1/23/2026
 DRAWN BY: H.P. SCHUKEI
 CHECKED BY: D.M. PECK
 SHEET 11 OF 18



Conceptual Plans Construction Estimate

- **\$720,000**
 - High Ticket Items
 - Granite Curbing - \$115,000
 - Stormwater Infrastructure - \$205,000
 - Concrete Sidewalk - \$107,000
 - Traffic Control / Contractor Mobilization - \$130,000

Upcoming Project Schedule

- **Natural / Cultural Resource Investigation** | Spring 2026 (Early May)
- **NEPA Clearance** | December 2026
 - Expected to be a PACE (Programmatic Categorical Exclusion)
 - Minor Impacts to Environmental Resources
 - Timeline is 6-8 months
- **Preliminary (60%) Plans** | March 2027
 - Refining Design
 - Fine Tune LOW (Right-of-Way)
 - Take a closer look at impacts to Municipal Water
- **Right-of-Way** | October 2027
- **Final (85%) Plans** | December 2027
- **Advertise Project for Construction** | February 2028
- **Construction** | Summer 2028



Stay in Touch!

GPI
Pat Travers
ptravers@gpinet.com

VHB
Dan Peck
dpeck@vhb.com

